




FADAA Presentation

Session 2 Introduction to WITS

Agenda

**** Questions Anytime****

1. FEi and WITS Overview
2. Demo of key WITS functionality

FEi Background

- Founded in 1998
- 80% of our business is Behavioral Health IT
- 110+ employees
- Headquartered in Columbia, MD with offices in Virginia
- 30% Average growth each year, debt-free

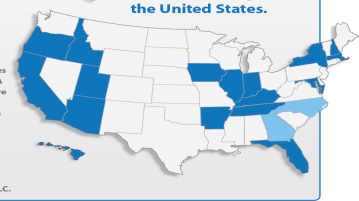
WITS Background

- Web Infrastructure for Treatment Services
- Open Source – Full Electronic Behavioral Health Record
- Developed by SAMHSA from 2001 – 2004
- Goal is to have State and Federal reporting requirements satisfied with a system that providers find clinically useful
- Reusable, collaborative model, ensures constant evolution
- Managed with monthly releases and WITS User Group (WUG)

WITS instances

- Alaska
- Arizona
- Arkansas
- Chrysalis House, KY
- Florida
- Georgia
- Hawaii
- Idaho
- Illinois
- Indiana
- Iowa
- Maine, CA
- Maryland
- Massachusetts
- Mendocino, CA
- New Hampshire
- New York
- North Carolina
- Oregon
- Salt Lake, UT
- San Diego, CA
- Sonoma, CA
- Tennessee
- Utah
- Washington, D.C.


WITS is currently used
in over 25 States and
Counties throughout
the United States.

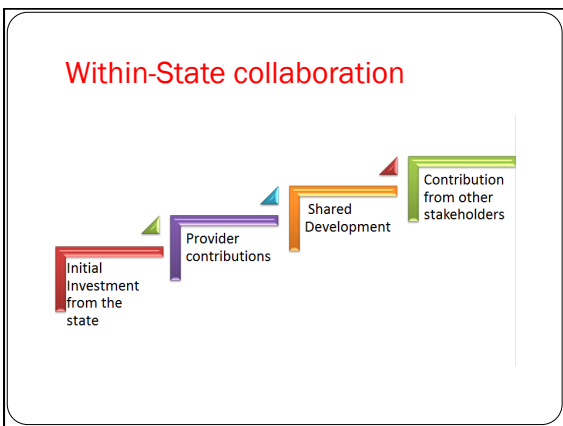


Collaboration Model

WUG: WITS User Group:

- Meets Monthly
- Formed in response to a need for collaboration between FEi and WITS users
- Communication hub to facilitate important FEi decisions that may impact multiple WITS customers
- Facilitate cost and resource sharing for the enhancement of the WITS system
- Shared ideas for process improvement, treatment improvement, and combined efforts for grant writing and cross organizational partnerships





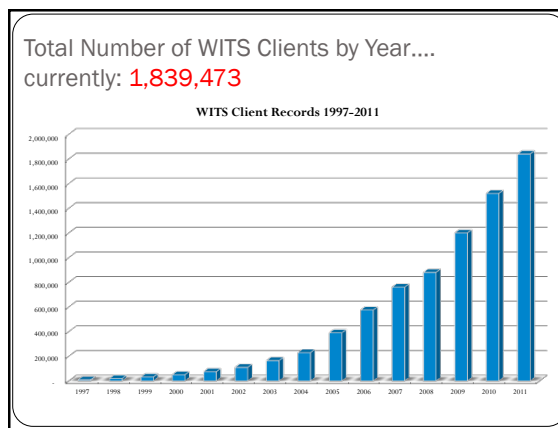
WITS Timeline & Collaboration

WITS Site	Development	Year
SAMHSA	Core Clinical, TEDS data collection	2002
Alaska	Mental Health	2003
Maryland	Consent / Referral	2003
SAMHSA	DENS ASI	2004
Illinois	ATR 1 - Voucher System	2004
Salt Lake	Treatment Teams	2004
California Counties	Medicaid Billing & NOMS	2005
Iowa / Utah	Treatment Plan	2005
Alaska	Repository / EDI	2006
Hawaii / Utah	Contracts and Payer	2006
Maryland	eCourt	2007
Salt Lake	Encounter-based Tx Planning	2007
Idaho	GAIN integration, Client-level URS	2008
Maryland	Automated Drug-Testing	2008
3 State Collaboration	Alerts	2009
Iowa / Indiana	Gambling	2010
Tennessee	Prevention	2010

WITS Growth

User Stats	Totals across all Sites
# of Agencies Supported:	2,634
# of Staff Supported	40,214
# of Clients Supported	1,839,473
# of Intakes	2,783,312

Geek Stats	Totals across all Sites
# of Lines of Code	2,163,727
# of Database Tables	1,600
# of Major Releases in last 2 years	24
# of individual enhancement items	3281
# of FEI Staff involved	30



Packages	Need	Features
WITS Base	WITS provides the ability to manage provider entities at the agency and facility (location) level, including detailed information about contacts, operating hours, and program/ modalities. Staff tracking allows agencies to manage all aspects of their staff including role-based permissions for HIPAA approved levels of sign-in. Client Profile houses all information about clients, including federal reporting data, links to external systems, and collateral contacts, which can be tied to client treatment activities.	<ul style="list-style-type: none"> Agency Management Facility Management Program Set Up Staff Management Role-based authorizations for system users Client Profile Key client data for state-federal reporting Collateral contacts Numbers that link clients to external systems
WITS Core Clinical	A clear choice for clinical case management, the WITS Core Clinical package offers all of the essential tools and assessments for collecting client demographics and administering clinical services efficiently and effectively. Use of Core Clinical modules ensures the appropriate collection of TEDS, URS and NDMs outcomes data. Comes complete with Program Enrollment, Consent and Referral, Treatment Plans and Progress Notes.	<ul style="list-style-type: none"> WITS Base Client Profile Intake Screening and Assessments Admission Program Discharge Consents/Referrals Treatment Plan and Treatment Plan Review Progress Notes Group Notes TEDS extract
WITS Advanced Clinical	A set of customized modules that provide advanced functionality that help support the clinical process or advanced administration thereof.	<ul style="list-style-type: none"> Discharge / Continuing Care planning Encounter based treatment plan Drug Screening Management Merging / Cleaning of Client records Multi-Provider Scheduling Emergency Services Module
WITS Mental Health	A series of modules that allow for the management of Mental Health inpatient and Outpatient clients (not hospitals). Collects URS data as well as provides access to Medication Dispensary and other mental health related functions.	<ul style="list-style-type: none"> Client Eligibility Standard Mental Health Assessment URS/NDMs Data Collection Medication Dispensary Physician Ordering Modified Diagnosis Recording Mental Health Court
WITS Outcomes	With WITS Outcome, organizations can capture state required data such as TEDS, URS, NDMs, and GPRA, which can be electronically submitted to SAMHSA at the click of a button or reported in table format. WITS Outcomes can be fully customized to meet state data reporting requirements.	<ul style="list-style-type: none"> WITS Base Administrative Data Extraction Data Report Exports TEDS/NDMs Data collection URS/NDMs Data Collection Generation of Block grant reporting

Packages	Need	Features
WITS Screeners and Assessments	A wide range of short screenings and longer assessment instruments are available through WITS. In some cases, these are built into WITS; in other cases, the clinician can link to an external website via web services, and pull back reports and other data. In some cases, assessments are used to populate TEDS/URS and NDMs data required for federal reporting.	<ul style="list-style-type: none"> DENS ASI, ASH-Lite, Teen ASI GAIN Short Screener, GAIN I interface HWQ Assist Screener Mental Health, SA and TBI Screener ADAD Link to electronic CA/ LDCUS Behavioral Health Assessment (Alaska) TAP (Treatment Assignment Protocol - Iowa and Maryland) Standard Mental Health Assessment Juvenile Justice Risk and Needs Assessment Link to electronic CAFAS/PCFAS
WITS VMS	With WITS Voucher Management System (VMS), organizations are able to manage client treatment records and vouchers with a great deal of control and flexibility.	<ul style="list-style-type: none"> WITS Base Client Eligibility Screeners GPRA Tool Direct SAS uploads Vouchers Electronic Referrals Contract Management Funding Management Flexible Capitation Federal Reporting ROSC Recovery Plan
WITS Prevention	The Prevention module allows collecting individual based and Population-based progress and strategies' data for National Outcomes Measures (NDMs) reporting as well as Block Grant application. Contractor is able to control and monitor providers' curriculum and/or coalition strategies real-time.	<ul style="list-style-type: none"> Group Notes Contract Management Curriculum management Coalition strategies
WITS Alerts	Provides daily management information to clinicians and agency staff, all linked to the home page. Allows agencies to customize alerts for required activities, such as treatment plan reviews, inactive client reengagement, case closures, staff re-certifications, billing transactions, etc.	<ul style="list-style-type: none"> Clinical Alerts Administrative Alerts User Alerts Billing Alerts
WITS End User Reporting	An end user reporting module based on Microsoft's Sequel Server Reporting Services. This is a highly customized module for a customer's specific system that allows them to create and manage their own reports, as well as publish them for other users to use.	<ul style="list-style-type: none"> Folder Management Report Subscription Services Ad Hoc Reports Customized Reports Agency and Cross Agency Report Models

Packages	Need	Features
WITS Client Invoicing	The Client Billing package offers organizations a complete WITS client case management system with the added capability of an easy-to-use billing feature that generates a hard copy and electronic records for invoicing clients.	<ul style="list-style-type: none"> WITS Base Claim Batching Encounter List Payment List Billing Transaction Cost Center Fee Collection
WITS Medicaid Billing	Create 837 NPFA transaction records with WITS Medicaid Billing. Fully capable of collecting SAMHSA 835 remittance advice/messages, your organization will be able to respond quickly and intelligently. This robust and secure system is completely NPFA compliant meeting federal standards and regulations.	<ul style="list-style-type: none"> WITS Base Create State Claim Claim Batching Clearing House Batching Cost Center EDB Transaction
WITS Payor	The Payor package is a flexible fund management billing system that allows providers to issue claims to multiple Payors including insurance companies, state and federal funding sources such as grants, programs, special population groups and more.	<ul style="list-style-type: none"> WITS Base Payor Plan Profile Agency Plan Profile Facility Plan Profile
WITS Contract Management	WITS Contract Management allows users to review and monitor treatment services that are offered by providers. This includes administration of service rates and human resource costs including hourly rates, units, and eligibility all with a great deal of flexibility and control.	<ul style="list-style-type: none"> WITS Base Manage Provider Services Provider Specific Rates Flexible Capitation Options

How WITS is used across the U.S

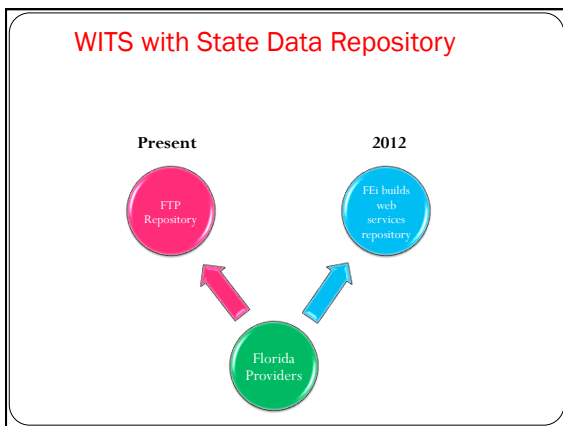
Packages	States													Counties					Other					
	AK	AR	AZ	FL	HI	ID	IL	IN	IA	MD	MA	NH	NY	OR	TN	UT	DC	North CA		Midwest CA	San Diego CA	South CA	Salt Lake UT	Chrysalis House NY
WITS Mental Health	•																							
WITS Core Clinical	•	•	•	•	•	•	•	•	•	•	•	•	•	•	•	•	•	•	•	•	•	•	•	•
WITS Medical Billing	•	•	•	•	•	•	•	•	•	•	•	•	•	•	•	•	•	•	•	•	•	•	•	•
WITS Voucher Management	•	•	•	•	•	•	•	•	•	•	•	•	•	•	•	•	•	•	•	•	•	•	•	•
WITS Payor	•	•	•	•	•	•	•	•	•	•	•	•	•	•	•	•	•	•	•	•	•	•	•	•
WITS Outcomes	•	•	•	•	•	•	•	•	•	•	•	•	•	•	•	•	•	•	•	•	•	•	•	•
WITS Contract Management	•	•	•	•	•	•	•	•	•	•	•	•	•	•	•	•	•	•	•	•	•	•	•	•
WITS Drug Court	•	•	•	•	•	•	•	•	•	•	•	•	•	•	•	•	•	•	•	•	•	•	•	•

WITS Platform

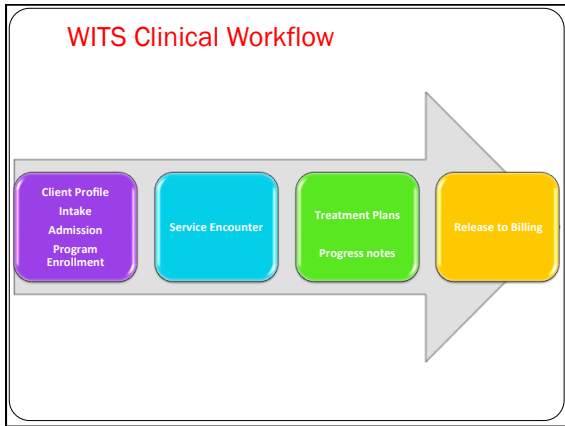
- Web-based
- .NET 3.5 Framework
- SQL Server 2008
- Authentication system is ADAM (Active Directory Application Mode)
- Ad-Hoc reporting tool = SSRS
- All connections over 128-bit SSL encrypted HTTPS
- Servers regularly upgraded – currently:
 - Quad core Xeon CPUs
 - RAID 10 redundant arrays
 - ~64GB Ram
 - 1 Gbps internet connection

Secure Hosting Services

- Redundant Power, Internet, and Storage Arrays
- Controlled and Secured Access
- SAS 70 Type I and II Compliant
- Firewall and Intrusion Detection
- Offsite, nightly, encrypted backups and storage



- ### What's next for WITS
- Full Meaningful Use certification: Q4 of 2011
 - Homeless Management Information System
 - CCD Interface to Statewide Health Information Exchanges
 - Biometric Electronic Signatures
 - Methadone Management Module – funded by SAMHSA
 - Clinical Decision Support – funded by NIH
 - SBIRT Grant support



WITS Demo

- Idaho: Substance Abuse

<https://idaho-training.witsweb.org/>