



THE FLORIDA LEARNING SYSTEM

February 2009

Volume III / Issue 5

National Partners

Substance Abuse & Mental Health Services Administration



Center for Substance Abuse Treatment



Florida Partners

Department of Children & Families, Substance Abuse Program Office

- *Stephanie Colston, Executive Sponsor*
- *Sheila Barbee, AR/STAR-SI Project Director*
- *Ximena Johnson, STAR-SI Administrative Assistant*



Florida Alcohol & Drug Abuse Association

- *Mark Fontaine, Executive Director*
- *Polly Ryan, Project Coordinator*

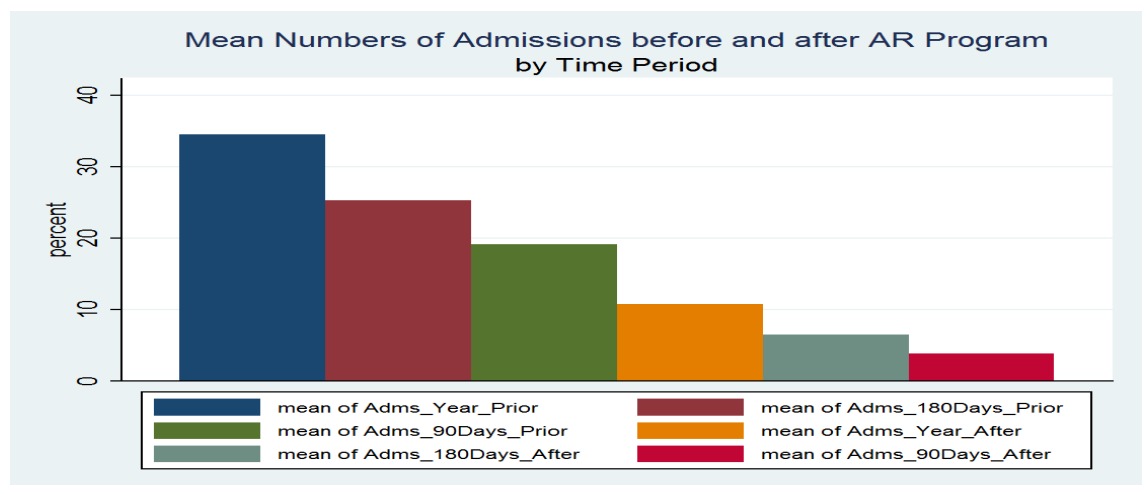


Preliminary Results Demonstrate Success of Advancing Recovery Project

Preliminary results from the Robert Wood Johnson Foundation's Advancing Recovery Project in Florida have been compiled. Three treatment providers, Operation PAR in Pinellas Park, River Region Human Services in Jacksonville and Spectrum Programs in Miami participated in the two-year grant to implement two evidence-based practices: the use of medication-assisted treatment (Vivitrol) and the use of case management to increase retention as clients move across program areas.

Clients who received medication-assisted treatment/Vivitrol as a component of their substance abuse treatment reported a steadily declining urge to drink based upon an urge to drink scale. Reducing the urge to drink enabled clients to more fully engage and benefit from other psychosocial services. Clients also reported decreased heavy drinking days. Clients beginning the program reported an average of 28.9 heavy drinking days monthly. At the time of the second injection, the number of heavy drinking days drops to 1.7 per month. By the third injection, the drinking rate drops to .3. Many of the clients reported abstinence following the first injection.

Another significant finding shows that clients who received medication-assisted treatment/Vivitrol experienced reduced readmissions to treatment when comparing pre-Vivitrol admissions to post-Vivitrol treatment. The significantly reduced rate of readmission (66%) was noted in 90 days, 180 days, and 1 year following treatment.



The State has submitted the report to the Robert Wood Johnson Foundation who will further analyze the findings as compared to results from other States that participated in the Advancing Recovery Project. The State will continue to collect follow-up data and use this data in determining the future of medicated-assisted treatment in Florida.

For more information on the results of the AR project, contact Sheila Barbee, Performance Management & Improvement Director at Sheila_Barbee@dcf.state.fl.us.

Mission: This newsletter is designed to share information, findings, resources and lessons learned from two state-wide partnership practice improvement initiatives.

Strengthening Treatment Access and Retention - State Implementation (STAR-SI)

The Sky's the Limit

February 2009

Volume III / Issue 5

Partners

Year One

★ Drug Abuse Comprehensive Coordinating Office (DACCO)
Tampa

★ Lakeview Center, Inc.
Pensacola

★ Manatee Glens Corporation
Bradenton

★ Meridian Behavioral Healthcare
Gainesville

★ Stewart-Marchman Center
Daytona Beach

Year Two

★ A.C.T.S.
Tampa

★ Family Resource Center
Miami

★ Gateway Community Services
Jacksonville

★ Harbor Behavioral Health Care
New Port Richey

★ Jackson North Community Mental Health Center
Miami

★ LifeStream Behavioral Center
Leesburg

★ The Village
Miami

Year Three

★ Bayview Center for Mental Health
Miami

★ The Centre for Women
Tampa

★ Coastal Behavioral Healthcare
Tampa

★ Drug Abuse Treatment Association (DATA)
Jupiter

★ River Region Human Services
Jacksonville

★ Sutton Place Behavioral Health
Yulee

★ Tri-County Human Services
Lakeland

The Centre for Women Benefits from STAR-SI

The Center for Women in Tampa joined the STAR-SI project in November 2008 and is already experiencing the benefits of change. *Project Recovery* is The Centre for Women's program providing outpatient substance abuse treatment specifically designed to assist women and their families. Executive Director and STAR-SI Executive Sponsor Beth Ficquette and Director of Behavioral Health Services and STAR-SI Change Team Leader, Denise Dydowicz have led an enthusiastic team which also includes program assistants and the Financial Director.



The Centre for Women's Beth Ficquette and Denise Dydowicz

After completing a walkthrough and looking at their baseline data, their first change cycle involved focusing on first impressions and creating a welcoming environment for potential clients. Their aim was to reduce the no-show rate for assessment appointments from 40% to 30%. The team met and revised the screening tool questions asked of clients who call in requesting services. The new questions are less intrusive and more welcoming which may encourage women to keep their initial intake appointment. This change produced a 4% decrease in the no-show rate. Follow-up observations and feedback led to additional training with other staff to spread the new, more welcoming approach throughout the program.

Inspired, but not satisfied with the overall impact on the no-show rate, the change team took on a more aggressive change. Beginning February 6th, Fridays became "open assessment" days at Project Recovery. Change Team Leader Denise Dydowicz, reports this change was well received by staff and clients but they are considering moving the open assessment to a day other than Friday. Staff has expressed some concern about asking women to come in for assessment and have an intense emotional experience followed by the weekend. However, she sees the benefit of providing open assessment day and has made that a permanent change.

The improved no-show rate at assessment resulted in an increase in admissions to outpatient treatment and, consequently, a waiting list. This inspired the team's next change cycle: to create an Intervention Group. Clients who have completed assessment can come to The Centre on Tuesdays and Thursdays for 1 hour of case management, group and some individual support. "We see it as a holding pattern for women until they get into outpatient treatment", says Ms. Dydowicz. "Most of the women we serve do not realize the intensity of treatment and the Intervention Group allows them time to adjust to coming to treatment and gives them time to establish childcare and take care of other responsibilities up front, before treatment begins."

The team will be measuring the impact of the Intervention Group on client retention and, if the business case reflects an increase in revenue, they plan to hire an additional staff.

Mission: This newsletter is designed to share information, findings, resources and lessons learned from two state-wide partnership practice improvement initiatives.



...More About the Florida Learning System

February 2009

Volume III / Issue 5

Networks

Central Florida Behavioral Health Network

Northeast Florida Addiction Services

South Florida Provider Coalition

Peer Mentors

Angie Maldonado
The Center for Drug-Free Living

Kevin Lewis
Chrissy DeWerff
Southwest Florida Addiction Services

Larry Allen
Central Florida Behavioral Health Network

Mari Alschuler
Jackson North Community Mental Health Center

Rosa West
Meridian Behavioral Healthcare

Laura Narado
South Florida Provider Coalition

Rick Hankey
Northeast Florida Addictions Network

Benny Haimovitz
Sapir Schwartz
The Harbor Behavioral Healthcare

Elyse Dermer
The Village South

Sherril Kincaid
DACCO

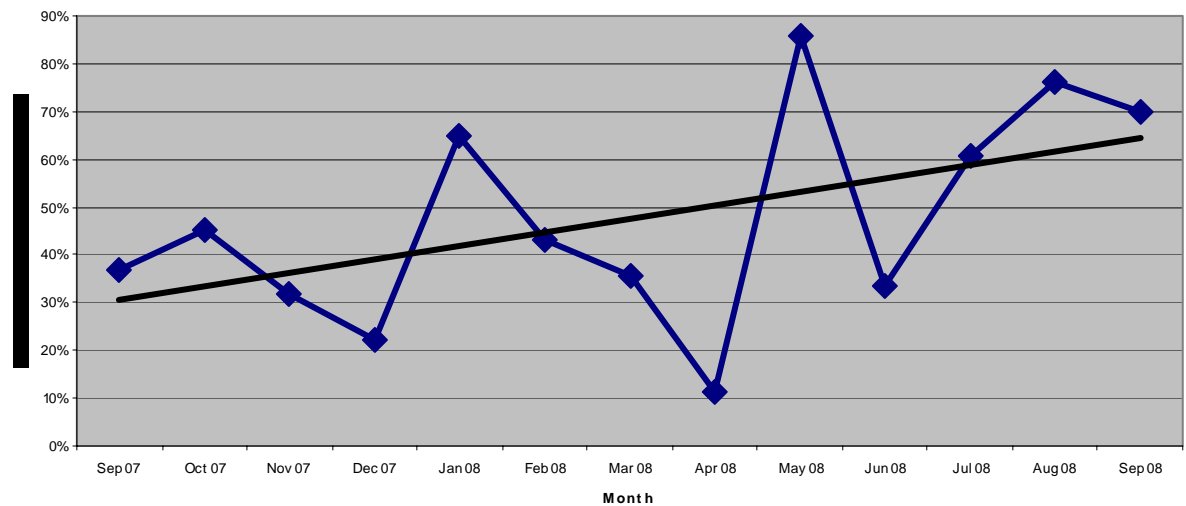
State Coach

Dr. Pauley Johnson
NIATx

STAR-SI Agencies Sustain Success

Agencies who participated in STAR-SI during years one and two of the grant are continuing to show success as a result of changes made to increase client access and retention. **The Harbor** in New Port Richey is reporting a dramatic increase in clients discharged from detox who have continued on to outpatient treatment services.

Percent of Clients Discharged From Detox Who Continue to Outpatient Treatment from The Harbor



At the start of the STAR-SI grant in September 2007, The Harbor recorded a beginning detox-to-treatment percentage of 36.7%. One year later, the rate has increased to 70%.

Similar results are shown at Manatee Glens in Bradenton. They entered the STAR-SI project in October 2006 with a baseline outpatient detox-to-outpatient treatment rate of 48% and have shown a steady increase to over 76% to-date.

One of the significant changes at **Manatee Glens** that we have highlighted in past issues of this publication (*September 2007*), is the use of Recovery Coaches to engage clients as they move from one level of care to the next. This successful change began during 2006 and has continued. Increasing revenues realized from the increased admissions to treatment support the Recovery Coach position.

2009 NIATx Summit / SAAS Conference

Registration is now open for the 2009 NIATx Summit / SAAS Conference in Tucson, Arizona. The three-day training event will be held at the JW Marriott Starr Pass Resort & Spa, July 29 – August 1. [Visit the conference website](#)

Mission: This newsletter is designed to share information, findings, resources and lessons learned from two state-wide partnership practice improvement initiatives.